



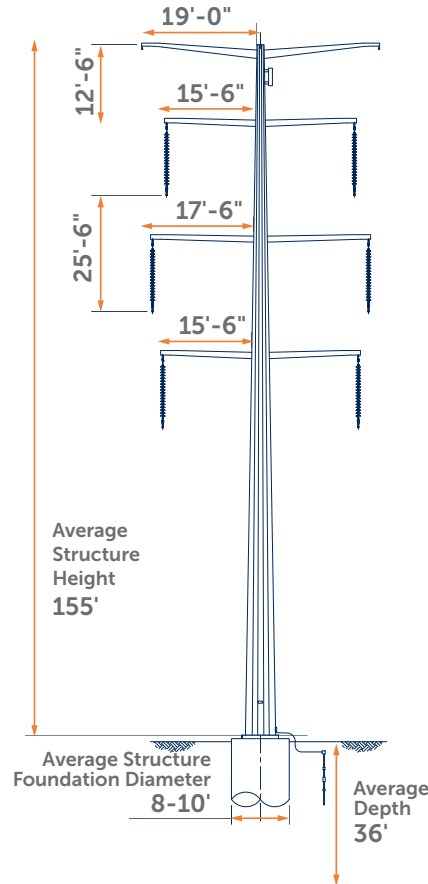
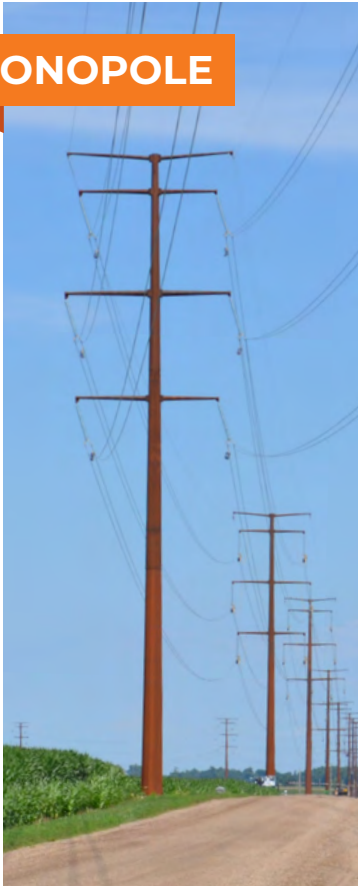
Jamestown to Ellendale



Otter Tail Power Company and **Montana-Dakota Utilities** are partnering to develop, construct, and co-own an approximately 95-mile, 345-kilovolt (kV) transmission line in North Dakota. The Jamestown to Ellendale transmission line (JETx) will run between Otter Tail Power's existing Jamestown substation and Montana-Dakota's existing Ellendale substation.

This project will help ensure the transmission grid continues to provide reliable, cost-effective electricity to customers across the region.

MONOPOLE

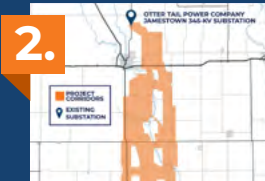


ROUTING PROCESS



1.

DEFINE STUDY AREA



2.

IDENTIFY PROJECT CORRIDORS



3.

HOST PUBLIC OPEN HOUSES



4.

DEVELOP ROUTE CORRIDOR



5.

HOST PUBLIC OPEN HOUSES

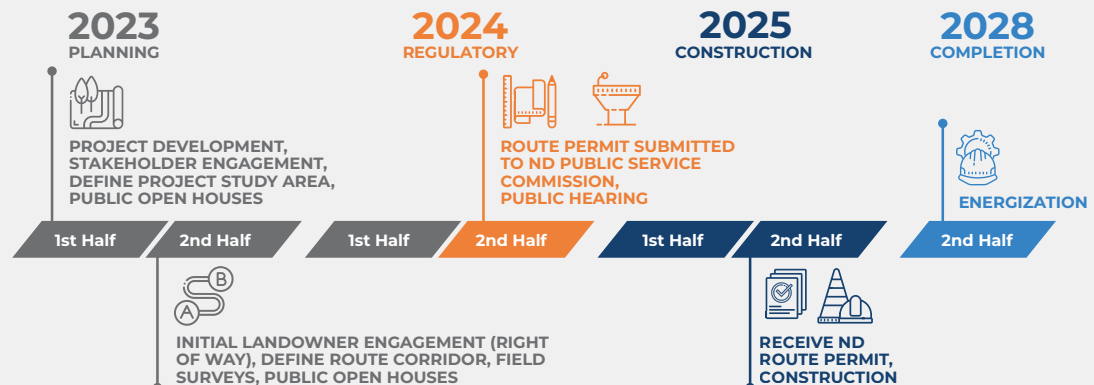


6.

WE ARE HERE PROPOSED ROUTE

PROJECT SCHEDULE

Developing and constructing a transmission line is a multi-year effort. We'll continue coordinating with landowners, local governments, agencies, and other stakeholders throughout the development process. We are currently targeting an in-service date of late 2028.



Scan the QR code to visit the project website.



**The schedule is subject to change.*

**OTTER TAIL POWER COMPANY
JAMESTOWN 345-KV SUBSTATION**

PROPOSED ROUTE (AUGUST 2024)

EXISTING SUBSTATION

**MONTANA-DAKOTA UTILITIES
ELLENDALE 345-KV SUBSTATION**